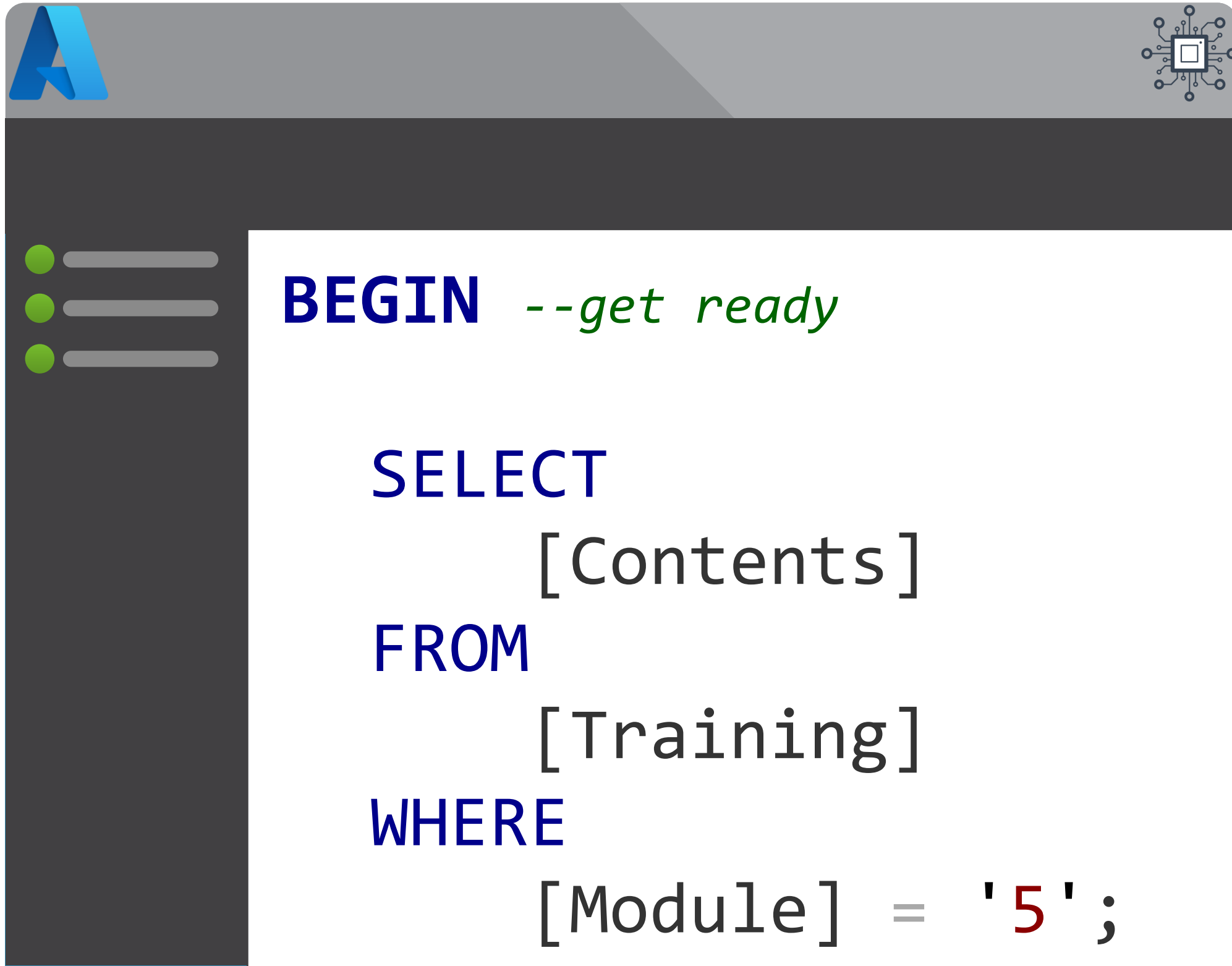


Module 5

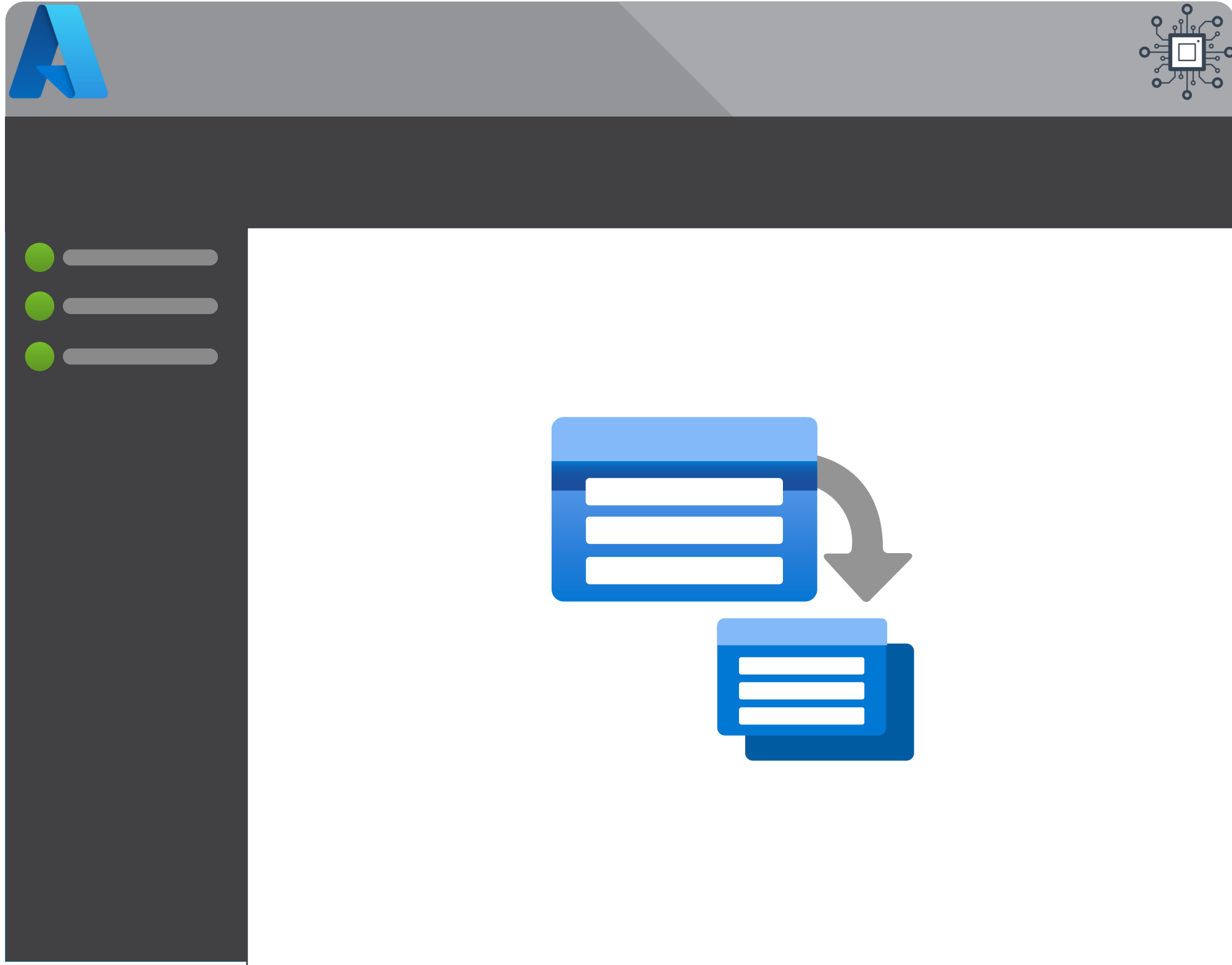
Pipeline Extensibility



- Azure Batch Service
 - Tasks
 - Compute Pools
 - Scaling
- Pipeline Custom Activities
- Azure Management API
- Azure Functions

Module 6

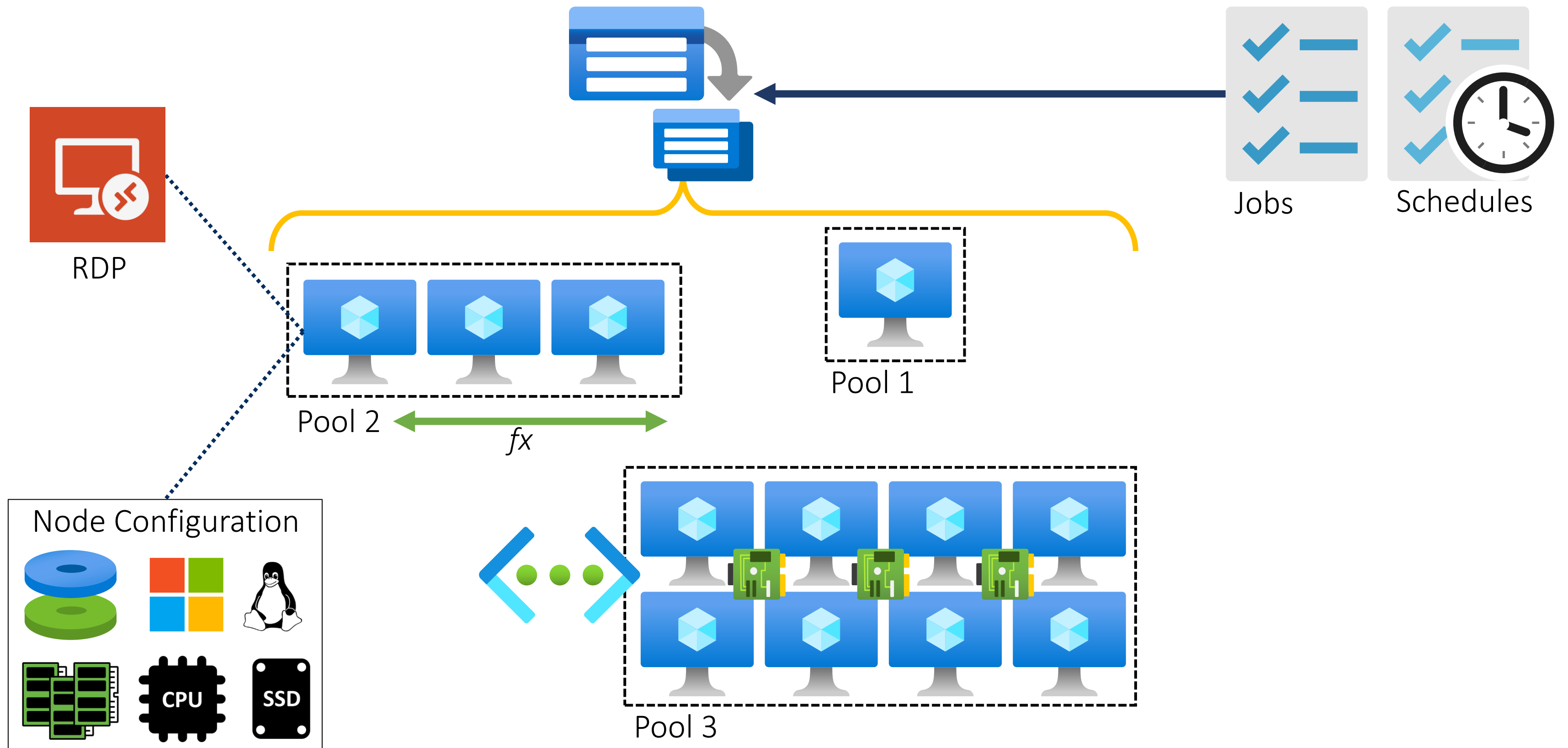
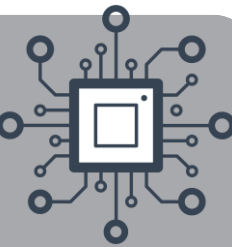
Pipeline Extensibility



- Azure Batch Service
 - Tasks
 - Compute Pools
 - Scaling
- Pipeline Custom Activities
- Azure Management API
- Azure Functions

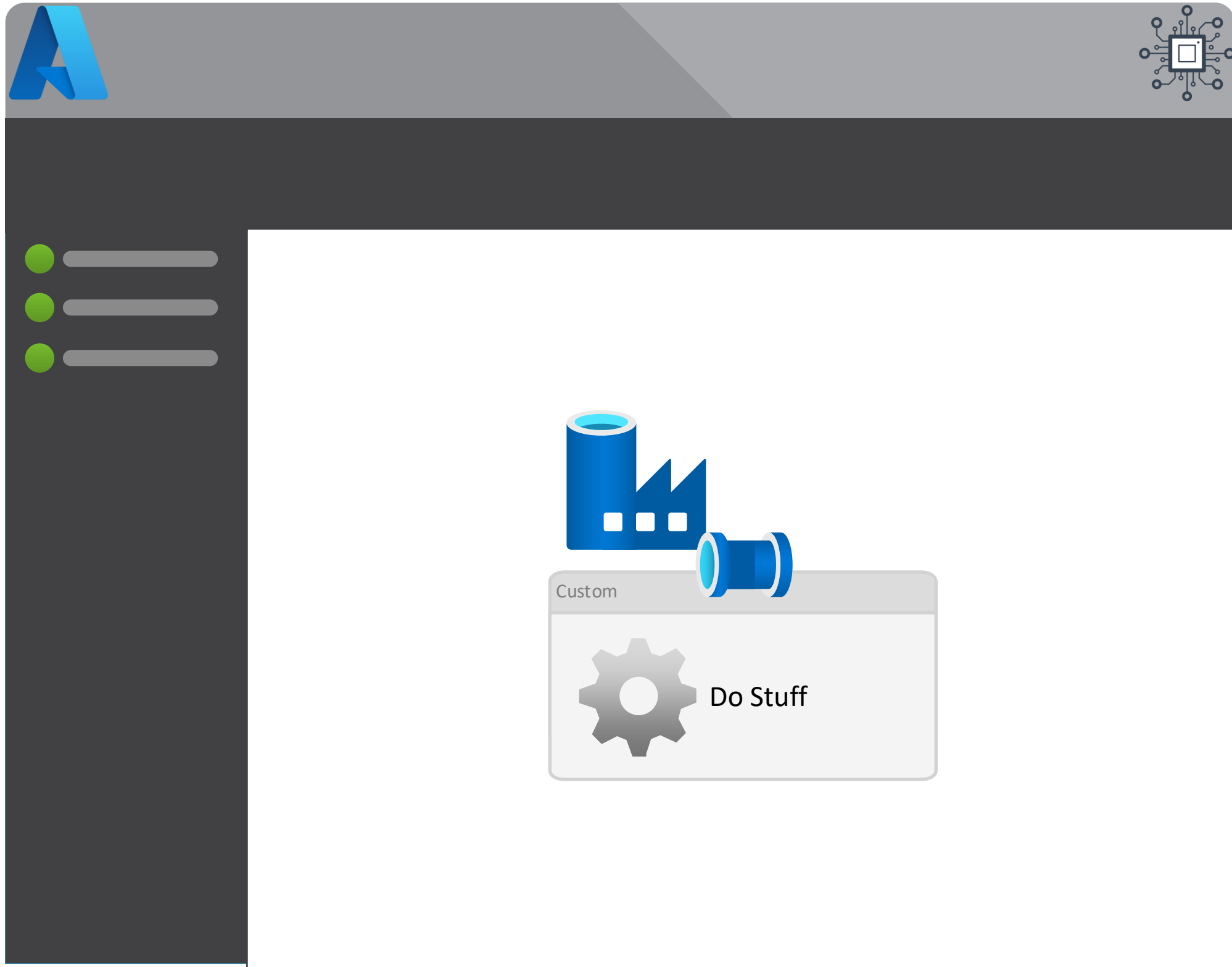


Azure Batch Service



Module 6

Pipeline Extensibility



- Azure Batch Service
 - Tasks
 - Compute Pools
 - Scaling
- Pipeline Custom Activities



Custom

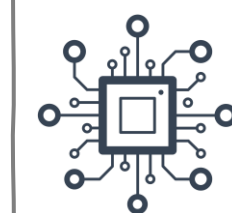
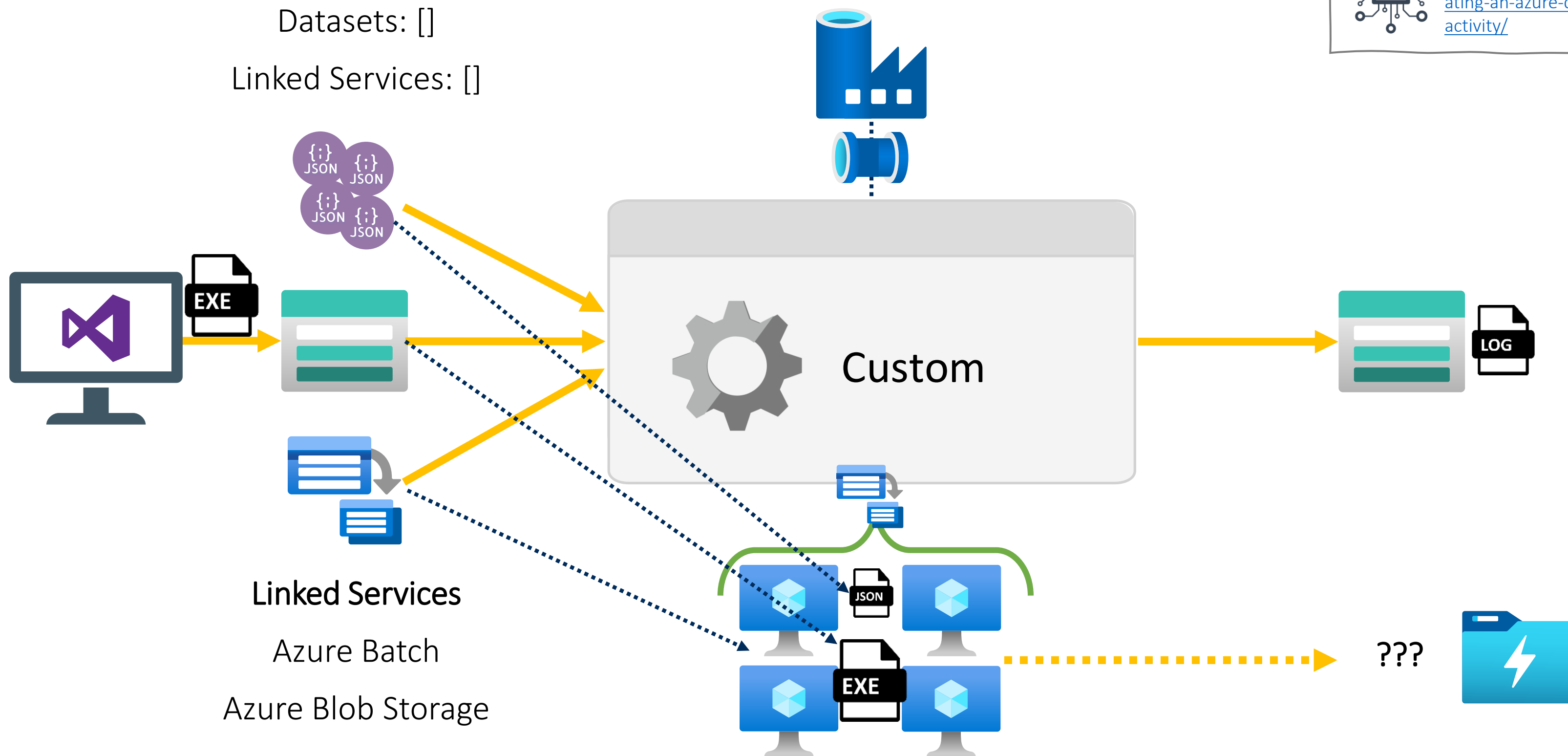


Extend Data Factory with Dedicated Scalable Compute and Custom Code

References Objects

Datasets: []

Linked Services: []

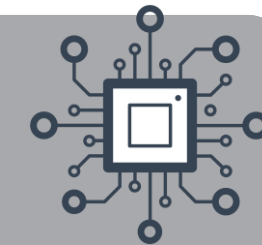


Creating a Custom Activity

<https://mrpaulandrew.com/2018/11/12/creating-an-azure-data-factory-v2-custom-activity/>



Custom

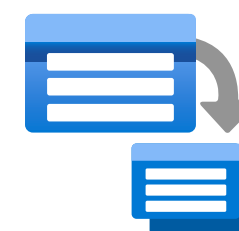
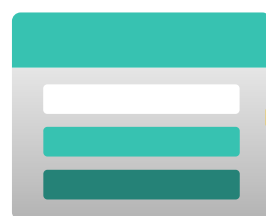
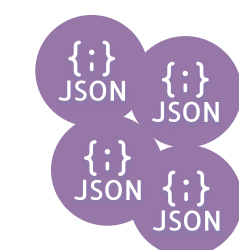


Extend Data Factory with Dedicated Scalable Compute and Custom Code

References Objects

Datasets: []

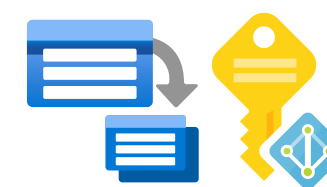
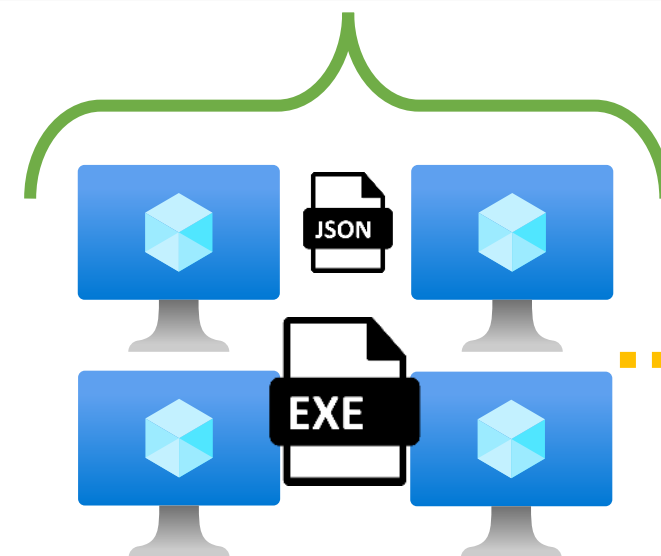
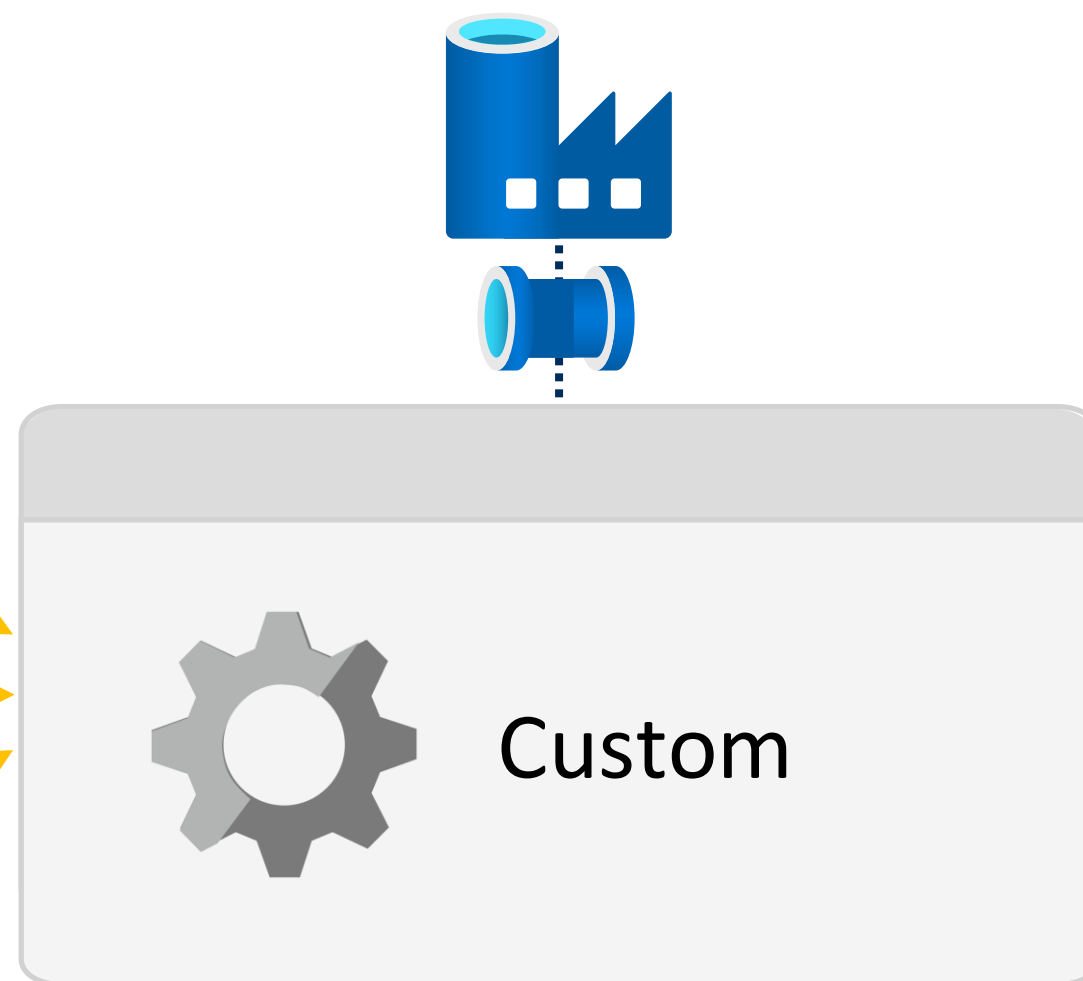
Linked Services: []



Linked Services

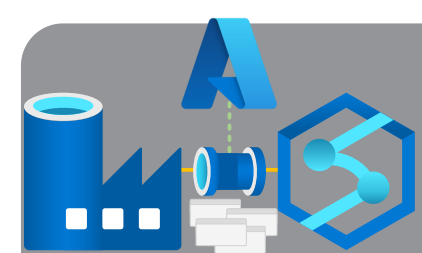
Azure Batch

Azure Blob Storage

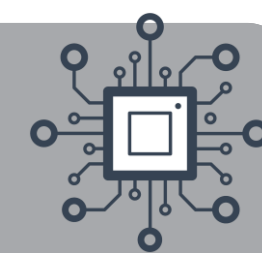


???





Custom

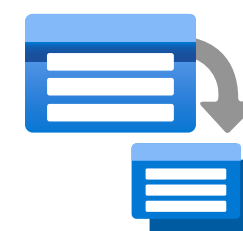
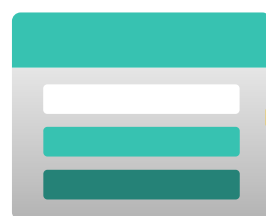
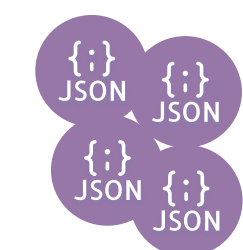


Extend Data Factory with Dedicated Scalable Compute and Custom Code

References Objects

Datasets: []

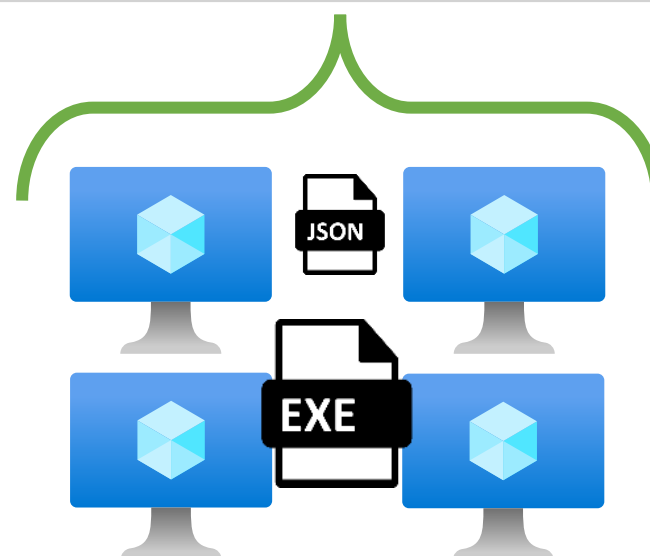
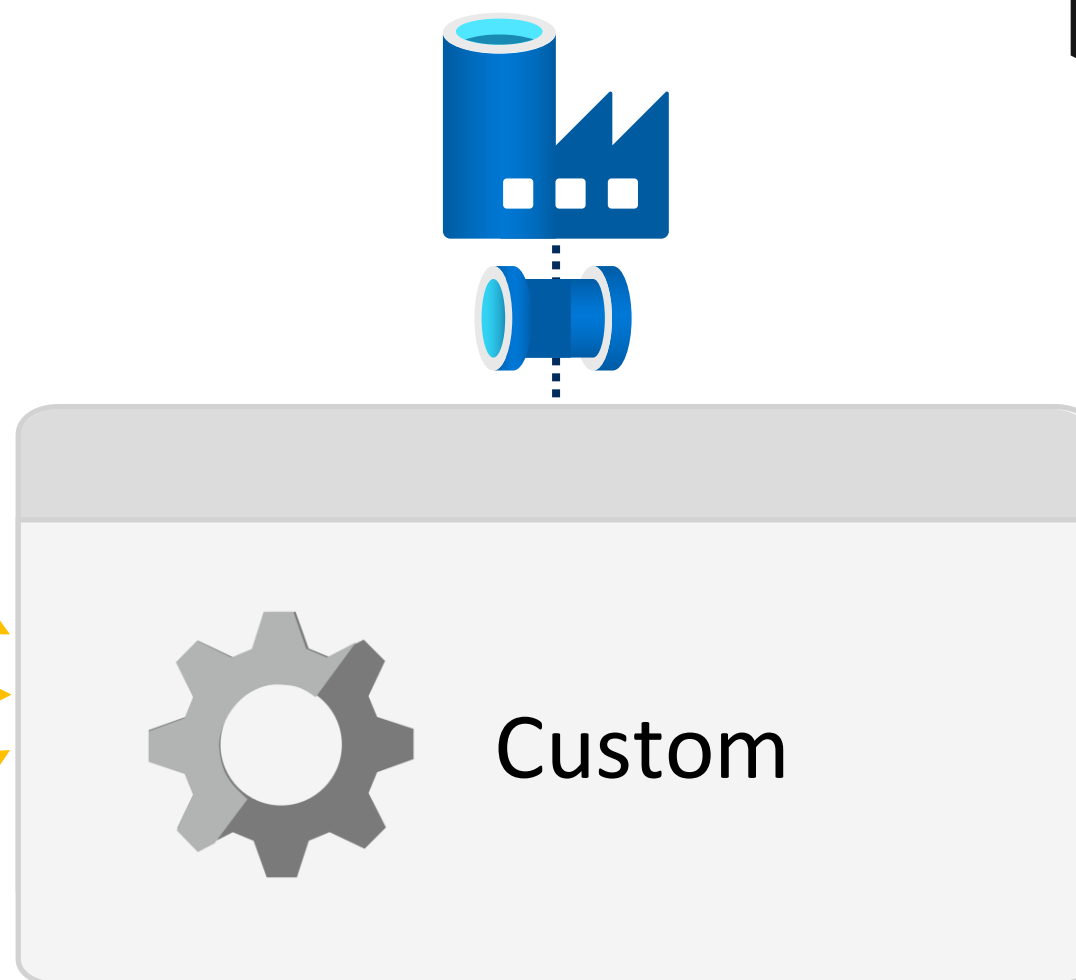
Linked Services: []



Linked Services

Azure Batch

Azure Blob Storage



New linked service

[Azure Batch](#) [Learn more](#)

Name *

BatchForTraining01

Description

Connect via integration runtime * [?](#)

AutoResolveIntegrationRuntime

Authentication method *

Managed Identity

Managed identity name: **TrainingFactoryDev**

Managed identity object ID: **f818bfb8-5602-4e49-9bd5-81f3855cc81f**

Grant Data Factory service managed identity access to your Azure Batch.

Account name *

batchfortraining01

Batch URL *

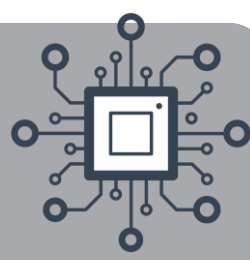
https://batchfortraining01.uksouth.batch.azure.com

Pool name *

Storage linked service name *

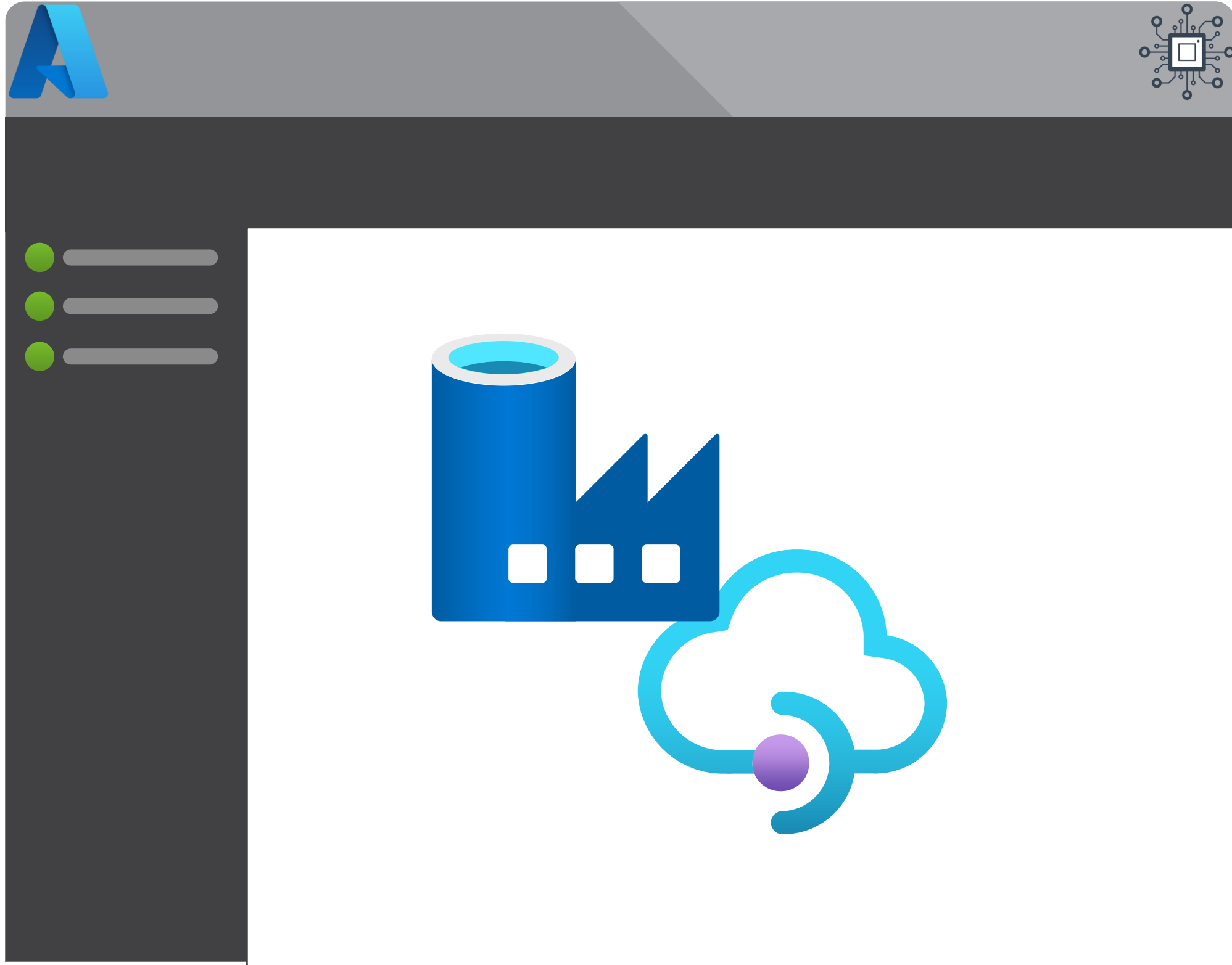
TrainingStore01

Pool ID



Module 5

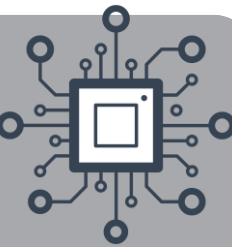
Pipeline Extensibility



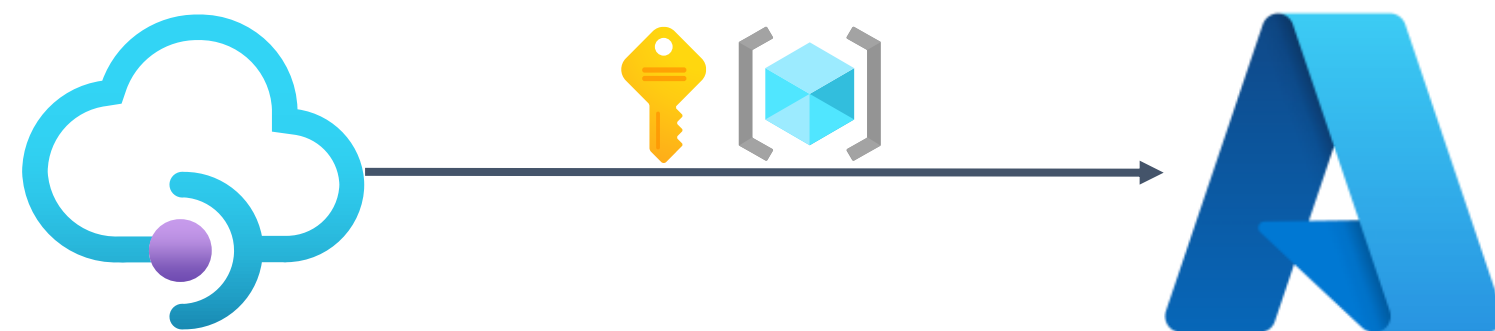
- Azure Batch Service
 - Tasks
 - Compute Pools
 - Scaling
- Pipeline Custom Activities
- Azure Management API
- Azure Functions



Management API's



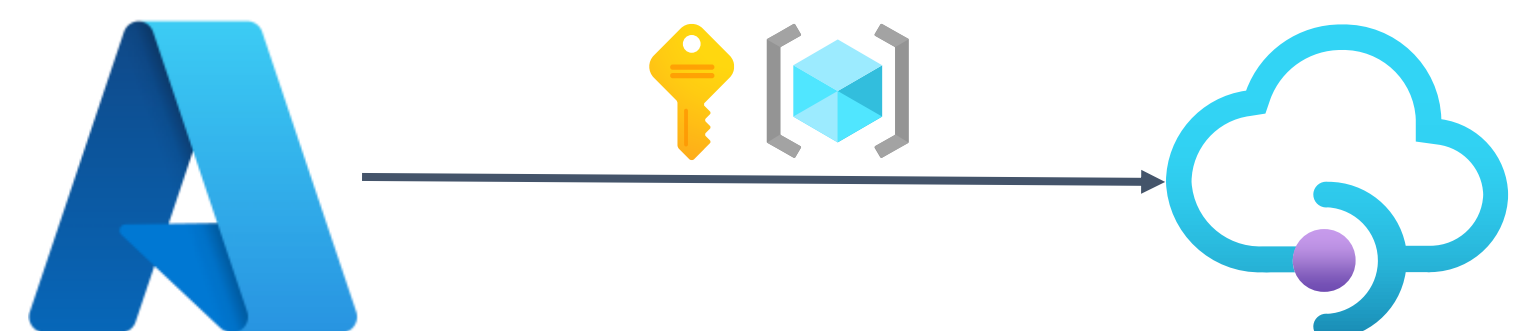
Azure Management API



Make REST calls to
interface with your
Azure Resources



Azure API Manager

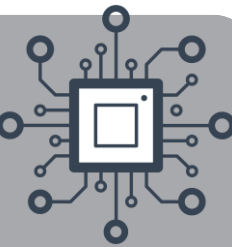


Build your own REST
interface as an
Azure Resource

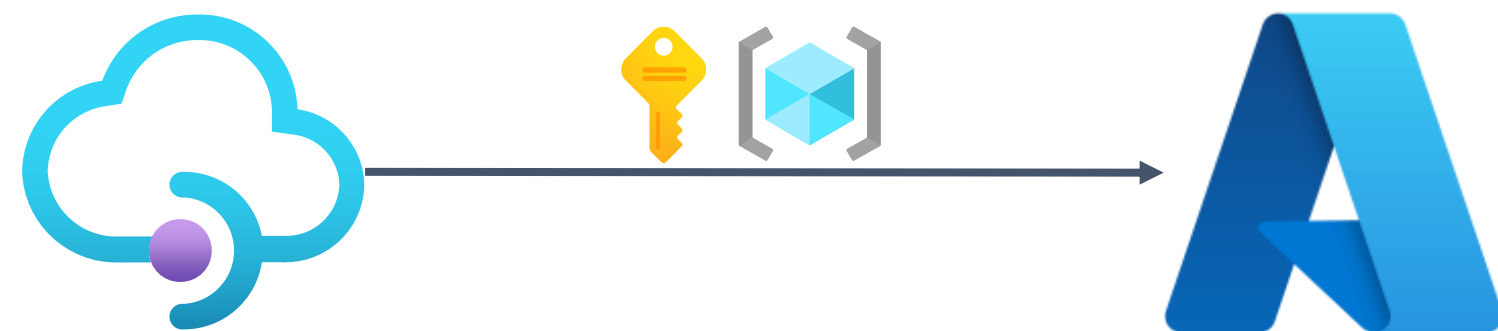




Management API's



Azure Management API



Make REST calls to
interface with your
Azure Resources

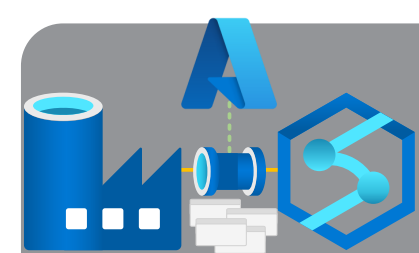
REST

Azure API Manager

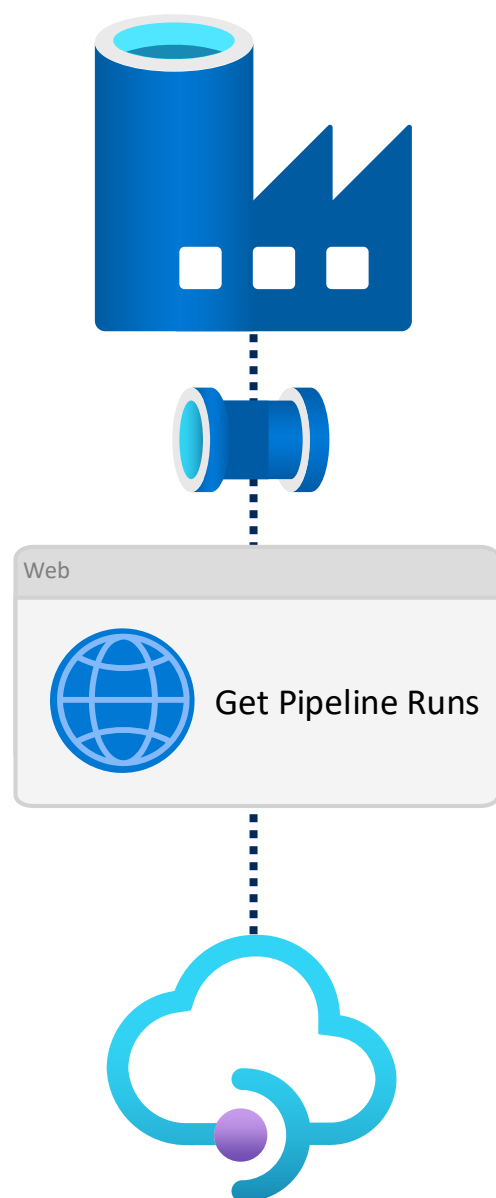
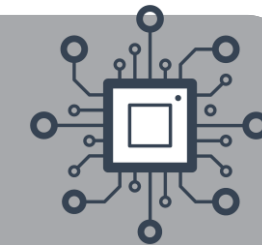


Build your own REST
interface as an
Azure Resource

REST



Orchestrate Everything



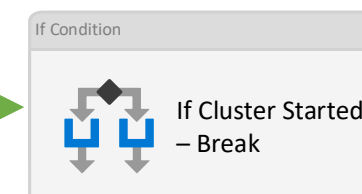
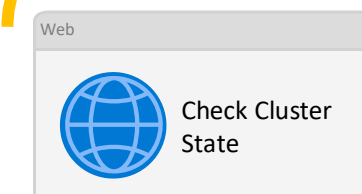
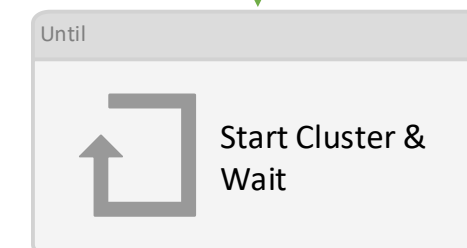
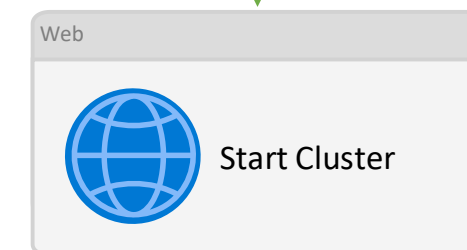
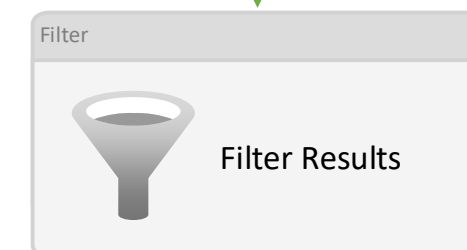
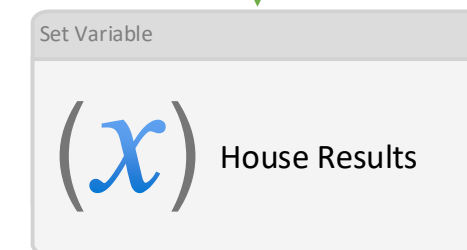
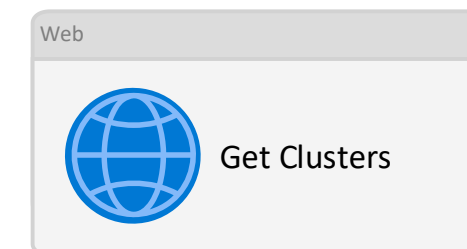
URL [https://management.azure.com/subscriptions/
@{variables\('SubscriptionId'\)}/
resourceGroups/
@{variables\('ResourceGroupName'\)}/
providers/
Microsoft.DataFactory/
factories/
@{pipeline\(\).DataFactory}/
queryPipelineRuns?
api-version=2018-06-01](https://management.azure.com/subscriptions/@{variables('SubscriptionId')}/resourceGroups/@{variables('ResourceGroupName')}/providers/Microsoft.DataFactory/factories/@{pipeline().DataFactory}/queryPipelineRuns?api-version=2018-06-01)

Body {
 "lastUpdatedAfter": "@{addDays(utcnow(),int(variables('QueryRunDays'))})",
 "lastUpdatedBefore": "@{utcnow()}",
 "filters": [
 {
 "operand": "PipelineName",
 "operator": "Equals",
 "values": [
 "@{pipeline().parameters.PipelineName}"
]
 }
]
}

Auth <https://management.core.windows.net>

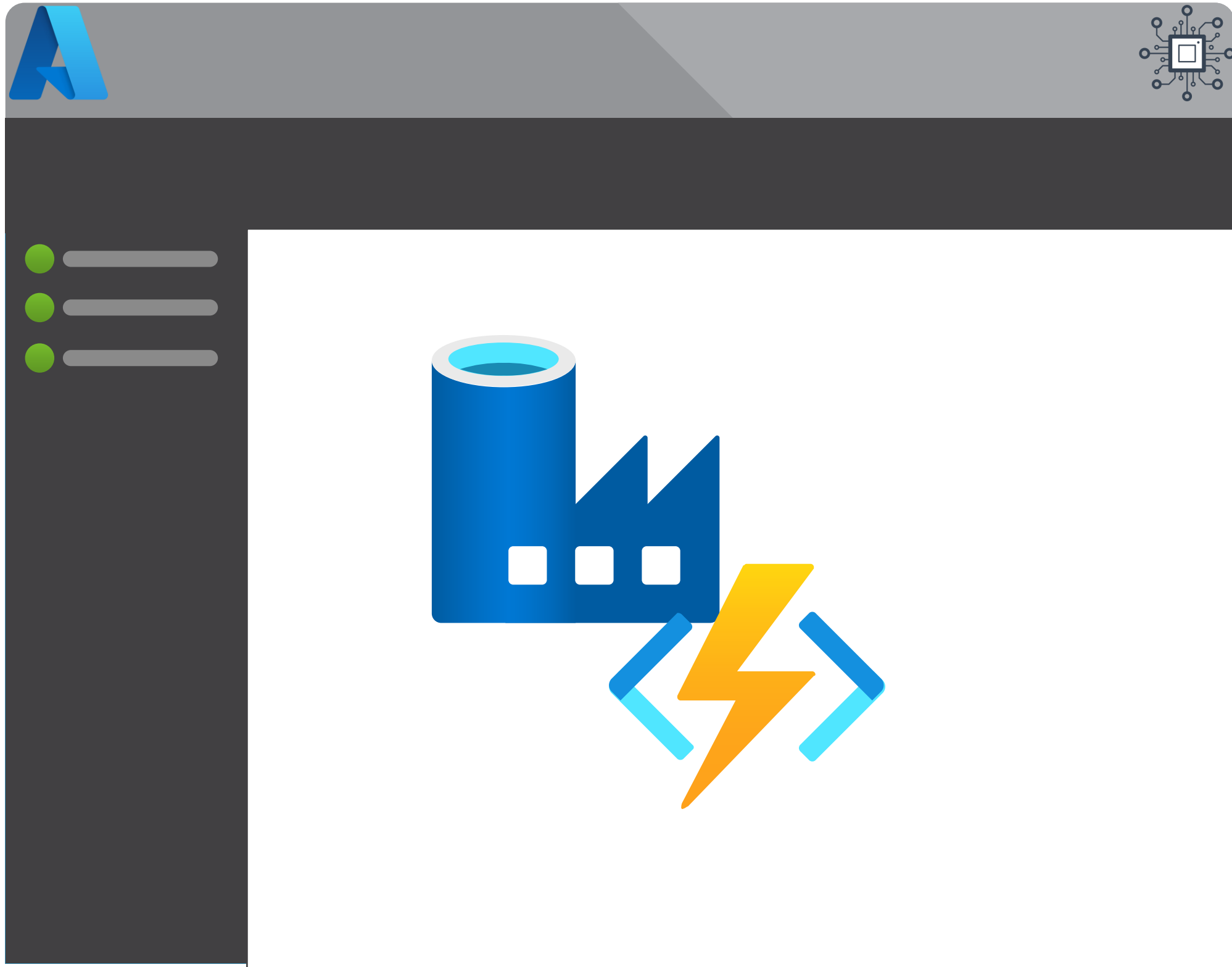


Managed Identity



Module 5

Pipeline Extensibility



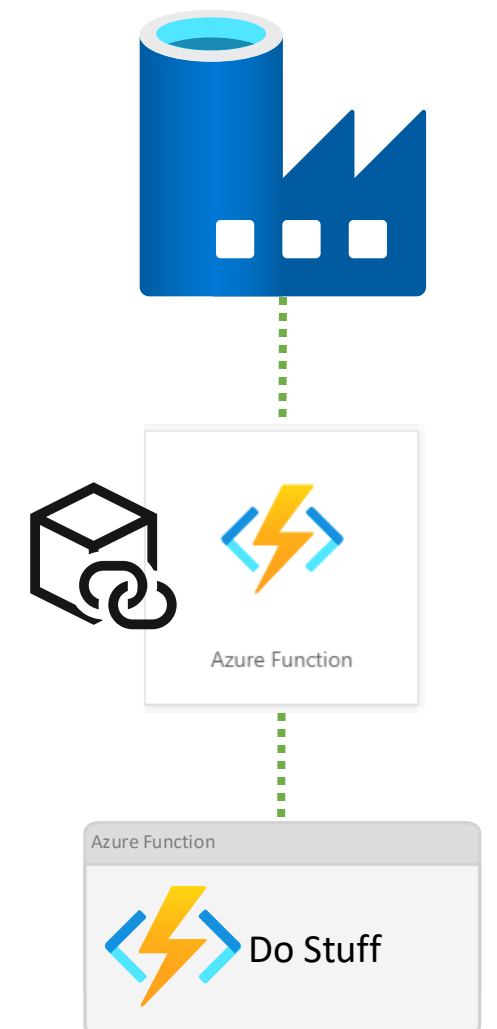
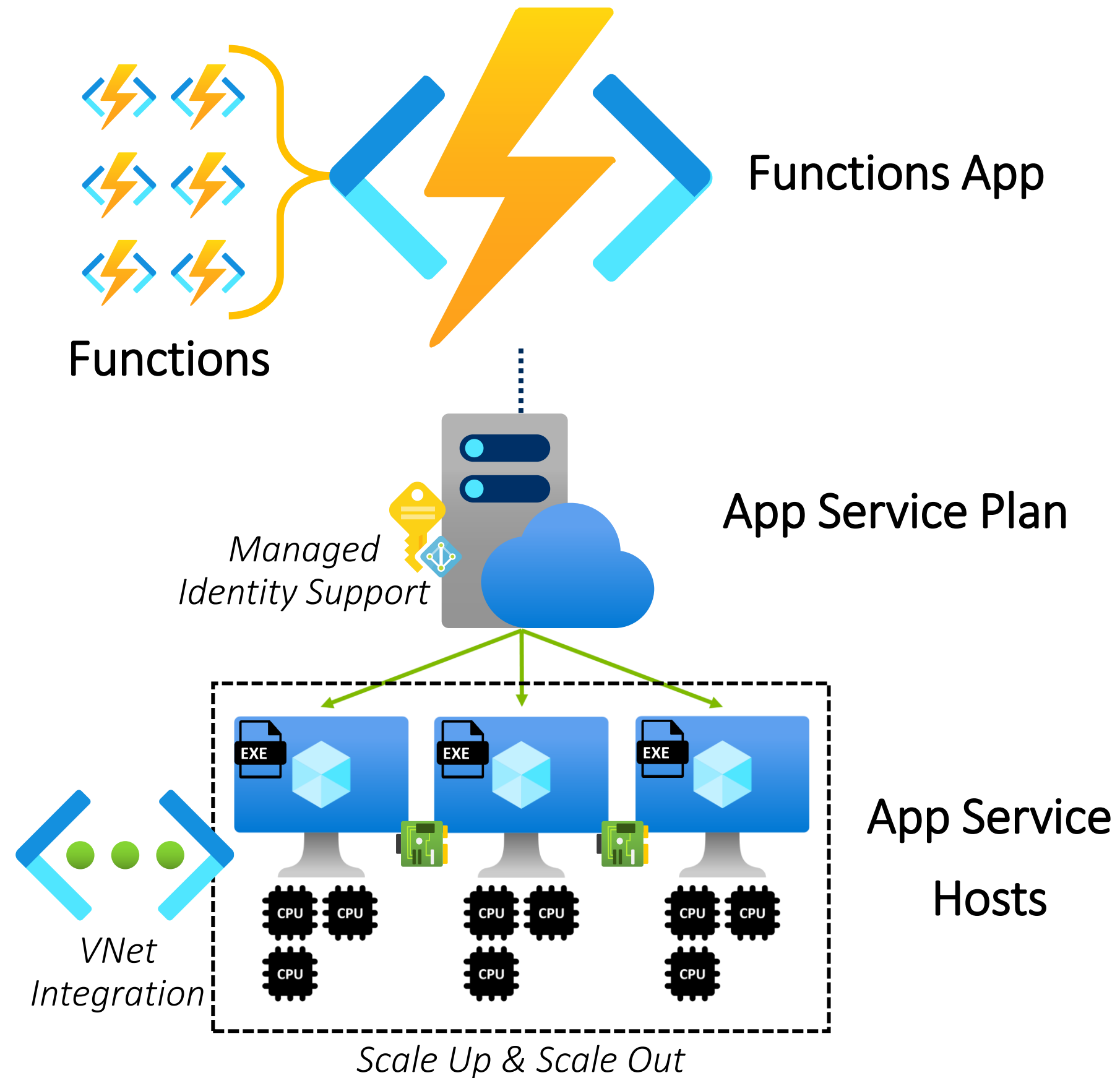
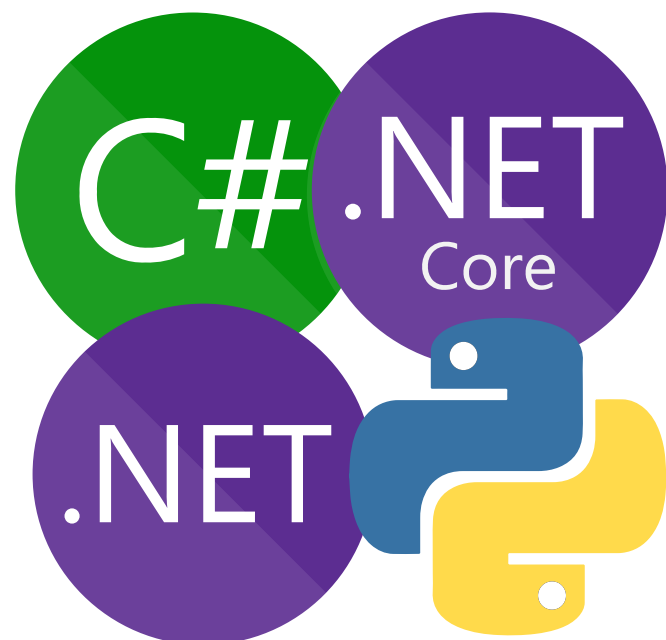
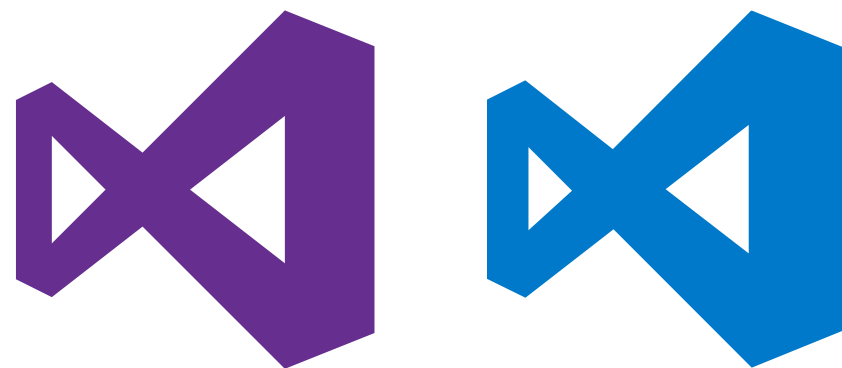
- Azure Batch Service
 - Tasks
 - Compute Pools
 - Scaling
- Pipeline Custom Activities
- Azure Management API
- Azure Functions

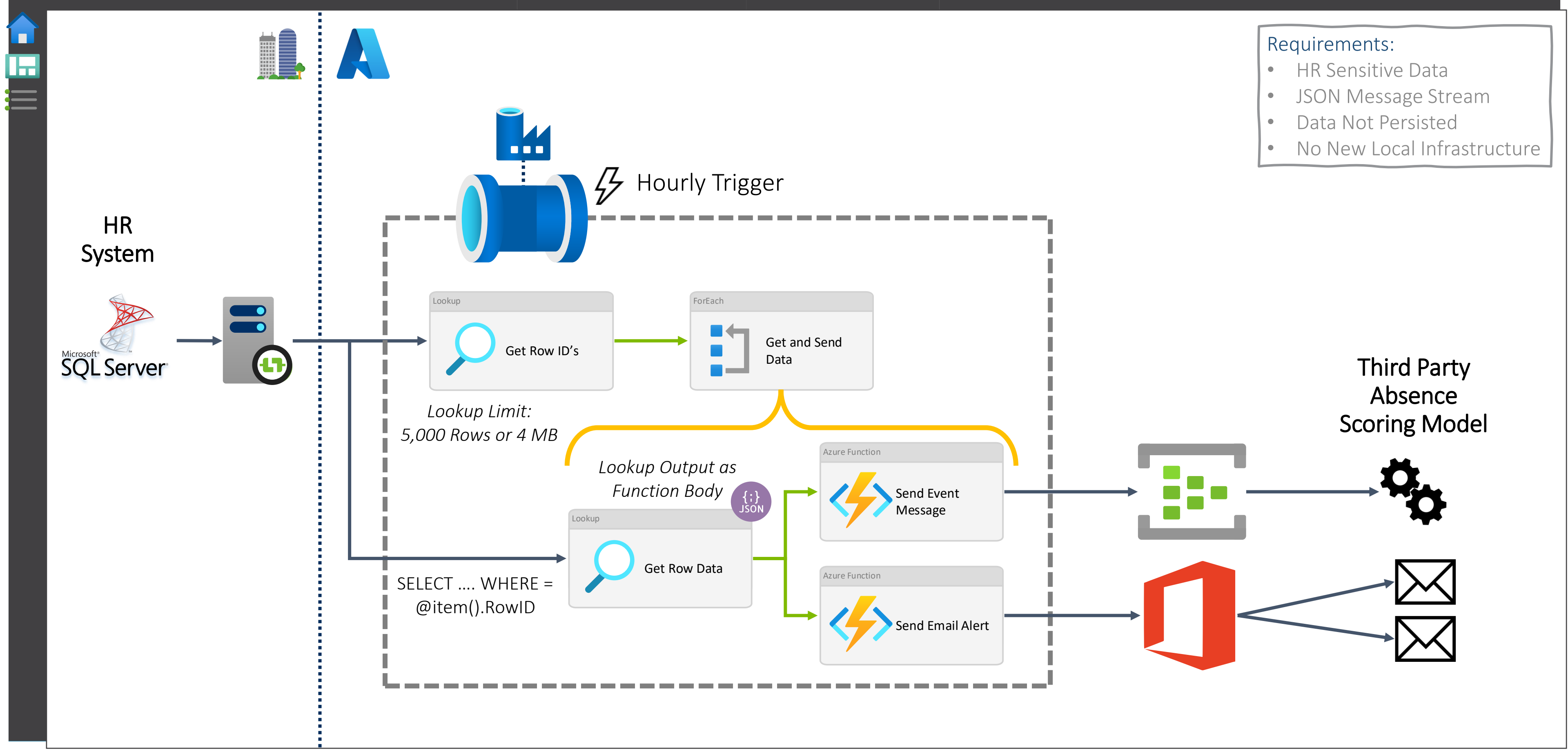


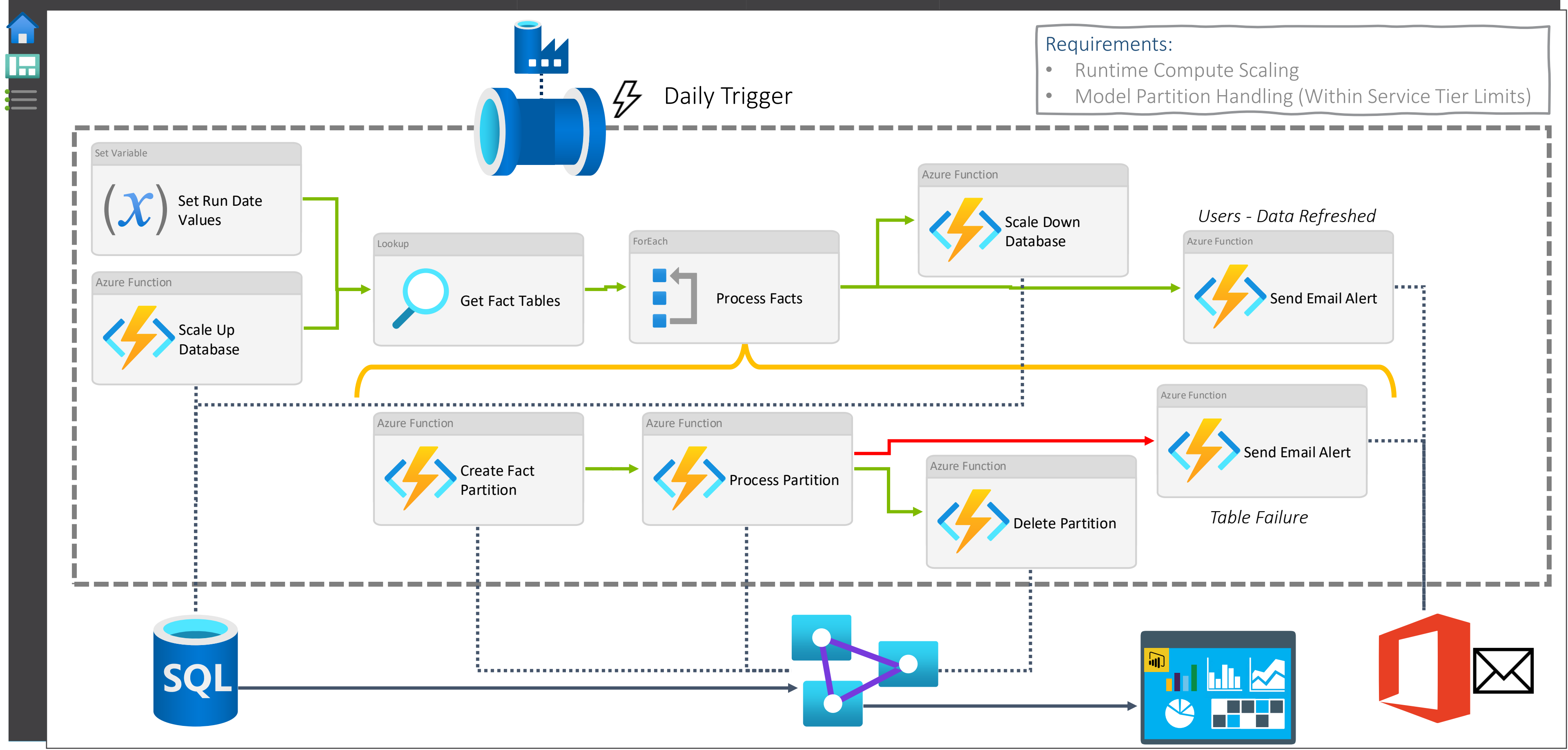
Azure Functions App



Serverless Scalable Bespoke Executions

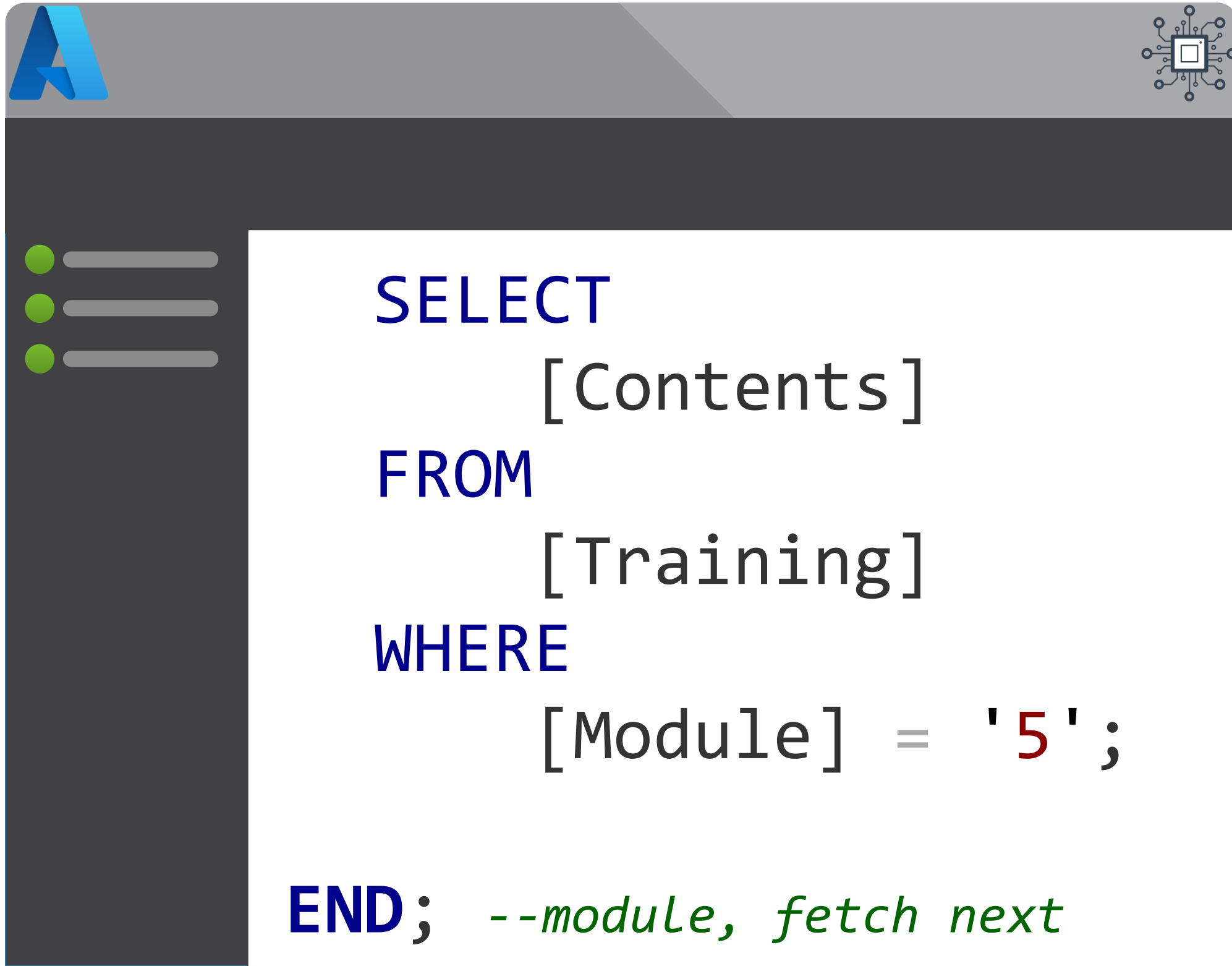






Module 5

Pipeline Extensibility



- Azure Batch Service
 - Tasks
 - Compute Pools
 - Scaling
- Pipeline Custom Activities
- Azure Management API
- Azure Functions